

REMOVING THE CHILD RESISTANT CAP FROM TITE CHAIRS



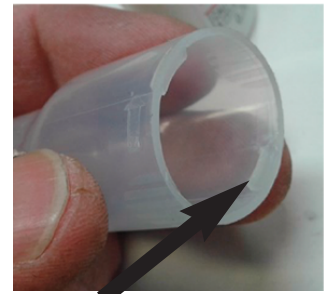
1
Grip Child Resistant Cap Firmly with Thumb and Fingers.



2
Squeeze Oblong Ends of Cap until the Cap becomes Rounded



3
Remove Cap from Bottle WHILE SQUEEZING



Retaining Tabs

TITE CHAIRS NOZZLE ATTACHMENT



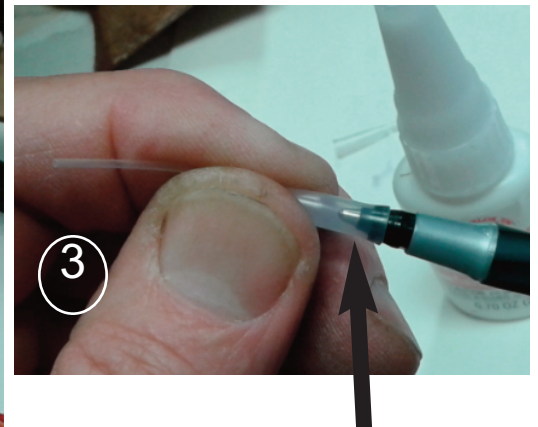
Package: Bottle and 2- nozzles



1
Squeeze and Remove Child Resistant Cap



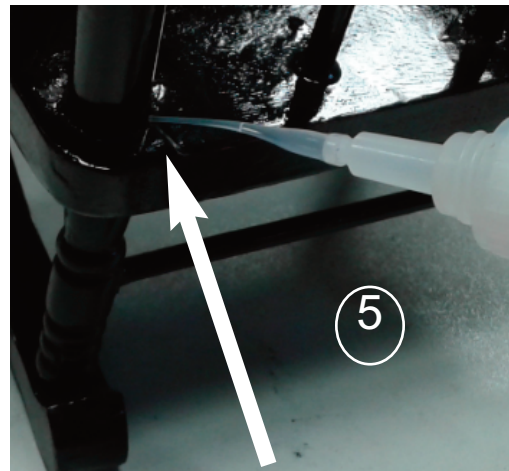
2
Unscrew Inner Cap



3
Expand Tip with Pen



4
Hold the Bottle in Upright Position and Carefully Insert Nozzle



5
Invert Bottle and Direct Tip to Chair Joint. Squeeze Gently.